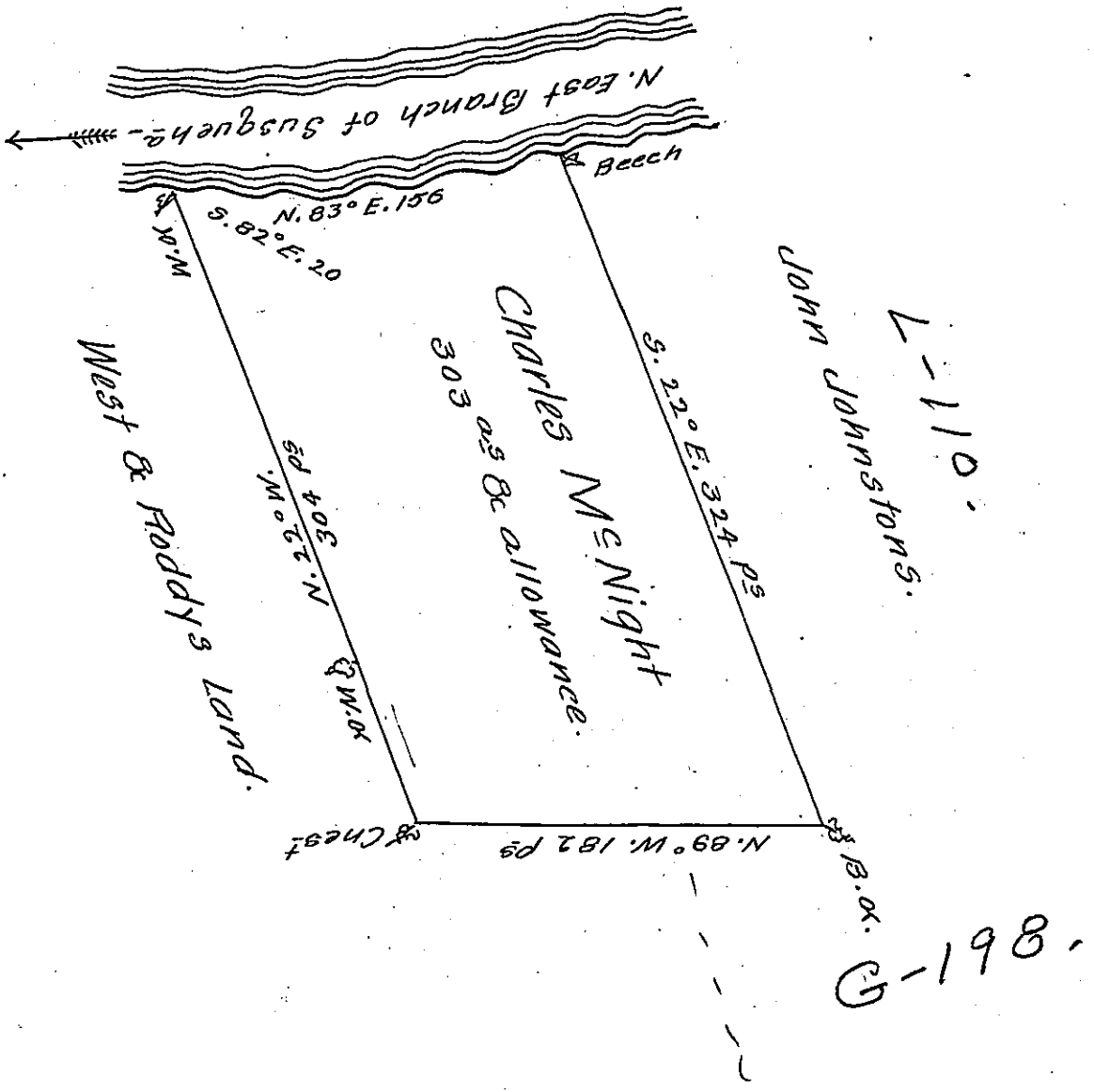


X



A Draught of a Tract of Land Called — Situate on the South-
 erly side of the North East Branch of Susquehanna River about
 a mile & a half above Ninepeck Falls adjoining Land surveyed for
 West & Roddy in the County of Northumberland Containing three
 hundred & three Acres besides the usual allowance of Six P. Cent for
 Roads & ca. Surveyed the ^{17th} day of October 1775 for Charles McNight in
 Pursuance of a Warrant dated the 13th day of March 1775.

by Cha^s Stewart Dep^y Sur^v.

To John Lukens Esq^r Sur^v Gen^l

IN TESTIMONY that the above is a copy of the original remaining on file in
 the Department of Internal Affairs of Pennsylvania, made
 conformably to an Act of Assembly approved the 16th day of
 February, 1833, I have hereunto set my Hand and caused
 the Seal of said Department to be affixed at Harrisburg,
 this eleventh day of October 1905.

Geo. C. P. ...
 Secretary of Internal Affairs.